



WILKINSBURG STAMP CLUB

P.O. Box 97903 Pittsburgh, PA 15227-0303 (APS #1214-122934)

WEBSITE: <http://www.wilkinsburgstampclub.netfirms.com>

E-MAIL: wilkinsburgstampclub@yahoo.com

Volume 4, No. 3

October, 2004

Meeting Day/Time: 2nd and 4th Sundays – Noon to 4 P.M.

Business Meeting: 2 P.M. (MAY- 4th Sunday only),
(JUNE, JULY, AUGUST 2nd Sunday only).

Meeting Place: Churchill Borough Building
2300 William Penn Highway
Churchill, PA.

President: David McConaha

Vice-President: Joe Bayuk

Second Vice-President: Jim Senkewitz

Secretary: Grant Latimore

Treasurer: Tom Reiff

Newsletter Editor: Tom Reiff

Membership Info: Andy Novotny 412-351-4954 e-mail: novoand@hotmail.com

Tom Reiff 412-881-8045 e-mail: treiffer@msn.com

Website Manager: Dave McConaha

July-August Contributors: Tom Reiff, David McConaha, Ray Damico

*** CIRCUIT BOOKS ***

Circuit books are available at every meeting. Members are encouraged to examine the circuit books, except when business meeting is in progress, to find items for their collection(s).

Circuit books contain stamps, covers, etc. You never know what you will find and based on what you see, you may even decide to start a new collection.

Meetings for October: 10th and 24th

November 14th and 28th – December 12th

Cookies and coffee are available at the meetings.

October 10th MEETING:

Regular business meeting.

October 24th MEETING:

Regular business meeting. After the meeting we will be having a show-and-tell program. Members are invited to bring an item or items from one of your collections and give a short talk.

CLUB DINNER:

The Club Dinner (actually it will be a luncheon this year) will be held at Palmieri's Restaurant in Turtle Creek.

***** WE NEED A MINIMUM OF 20 PEOPLE TO HAVE THIS LUNCHEON *****
*** PLEASE SEE ENCLOSED RESERVATION FORM FOR DETAILS ***

MEMBERSHIP DUES:

***** A FRIENDLY REMINDER *****

Your membership expire date is on your mailing label. As of September 26, 2004 there are ~~33~~¹⁵ members who have not paid their dues (or have only partially paid their dues) for 2005. If your expire date is "highlighted" on your mailing label, it indicates that your dues have NOT been PAID IN FULL for the current year.

Annual Dues are only \$8.00 for the first family member and only \$4.00 for additional members at the same address. Junior members, 16 and under are only \$2.00.

If your dues are not received by October 31st, 2004 the Club will regretfully drop you from the Membership.

FROM THE DESK OF YOUR PRESIDENT:

The officers of the Club are trying to preserve the history of our Club. We have successfully accumulated a complete set of our annual souvenir sheets and are now trying to accumulate a complete set of our show covers. Covers were started in 1983 and have continued each year. We are searching for five (5) covers for years 1984, 1985, 1986, 1987 and 1989. If any member has one or more of these and would like to donate them to our Club, please call or e-mail me. You can also bring them to our meeting. Thank you!

David F. McConaha
412-831-9249
e-mail: davidmconaha@yahoo.com

FREE WEB SITE ADVERTISING:

ATTENTION – Club stamp dealers or members who sell stamps can now advertise on our web site for **FREE**. Whether you are a dealer who has a mail-order business or a collector/member that has stamps to sell, you can place a half-page ad on our web site.

Once you stop selling stamps, it is your responsibility to notify us to remove your ad. Please see me at a meeting with your ad or mail to our P.O. Box listed at the top of this newsletter.

Submitted by: David F. McConaha, Web Manager

NEW VENUE FOR WILKPEX 2005 (APRIL 16-17):

As reported in the September newsletter, the club has moved the show to a new location. Since reported, the name of the venue has changed the name from WILKINSBURG LODGE, NO. 577 B.P.O. OF ELKS to

WILKINS TOWNSHIP ELKS CLUB, 718 BROWN AVENUE, WILKINS TOWNSHIP, PA 15145-1112

EASY ACCESS VIA THE CHURCHILL EXIT FROM I-376 (PARKWAY EAST)

NOTE: BROWN AVENUE STARTS WHERE BEULAH ROAD (IN CHURCHILL) ENDS.

2005 SCOTT CATALOGS ORDERED/RECEIVED:

The 2005 Scott Catalogues and the 2005 Scott U.S. Specialized Catalogue have been ordered. Currently Volumes 1 through 5 have been received and are available at the meetings.

DID YOU KNOW - INTERESTING PHILATELIC FACT:

The last Special Delivery stamp issued by the United States was on May 10, 1971, over 33 years ago! Images of some of these issues are shown at the top of this newsletter and also on Page 3. Tom's Topics on Page 4 lists these stamps along with a postal history item.

END OF AN ERA:

Excerpt from an article in Linn's Stamp News:

On September 28th, sending mail by rail ended. On August 24, Amtrack informed the U.S. Postal Service that it would not renew its contract to carry mail at the end of the government's fiscal year. Reason: Not profitable. A postal spokesman said the decision "will have no effect on customers at all". All the mail will be shifted to trucks".

Railroads began carrying mail in 1832, building a tradition that grew into the Railway Mail Service. At its height, it had special cars on all major rail routes, carrying and sorting mail as the trains moved across the country.

Following the passage of the 1958 Transportation Act, many money-losing passenger routes were abandoned by the railroads, and by 1965 there were only 190 trains carrying mail, and by 1970 there were virtually no first-class mail on railroads.

The last railway post office, which operated between Washington, D.C and New York City made its final run on July 30, 1977.

LOCAL AREA STAMP CLUBS:

Other local area stamp clubs include The Philatelic Society of Pittsburgh, the Westmoreland County Philatelic Society and the Butler County Philatelic Society. For information on these clubs please see our website.

PITTPLEX '04 STAMP SHOW AT NEW LOCATION:

The Philatelic Society of Pittsburgh annual stamp exhibition and bourse is being held at a new location. The 2004 show is being held on at The South Fayette Fire Hall located at 661 Millers Run Road in Bridgeville (South Fayette Township), PA. DATES: Saturday November 13th from 10AM – 5PM and Sunday, November 14th from 10AM to 4PM. DIRECTIONS: I-79 Exit 54 (Bridgeville Exit), Left on Route 50 West, 0.5 miles to Millers Run Road, Right 2.3 miles to the Fire Hall.

UPCOMING AREA SHOWS (Please see our website for these and additional shows):

OCTOBER 1-3 – KING OF PRUSSIA, PA – Philadelphia National Stamp Exhibition. Valley Forge Convention Center, 1160 First Avenue. Bourse Hours: 11AM – 6PM (Friday); 10AM – 6PM (Saturday); 10AM – 3PM (Sunday)

OCTOBER 2-3 – WEIRTON, WV – STEUPEX '04, Holiday Inn, 350 Three Springs Drive. Bourse Hours: 10AM – 6PM (Saturday); 10AM – 4PM (Sunday)

OCTOBER 16-17 – ROCKY RIVER, OH (Cleveland Area) – CUY-LORPEX 2004. Lutheran High School, 3850 Linden. Bourse Hours: 10AM – 5PM (Saturday); 10AM – 4:30PM (Sunday)

OCTOBER 30 – PITTSBURGH, PA – James Reeves Collectibles. Comfort Inn. 699 Rodi Road (Exit 11, I-376) Penn Hills. Bourse Hours: 10AM – 5PM

*** UNITED STATES SPECIAL DELIVERY STAMPS ***

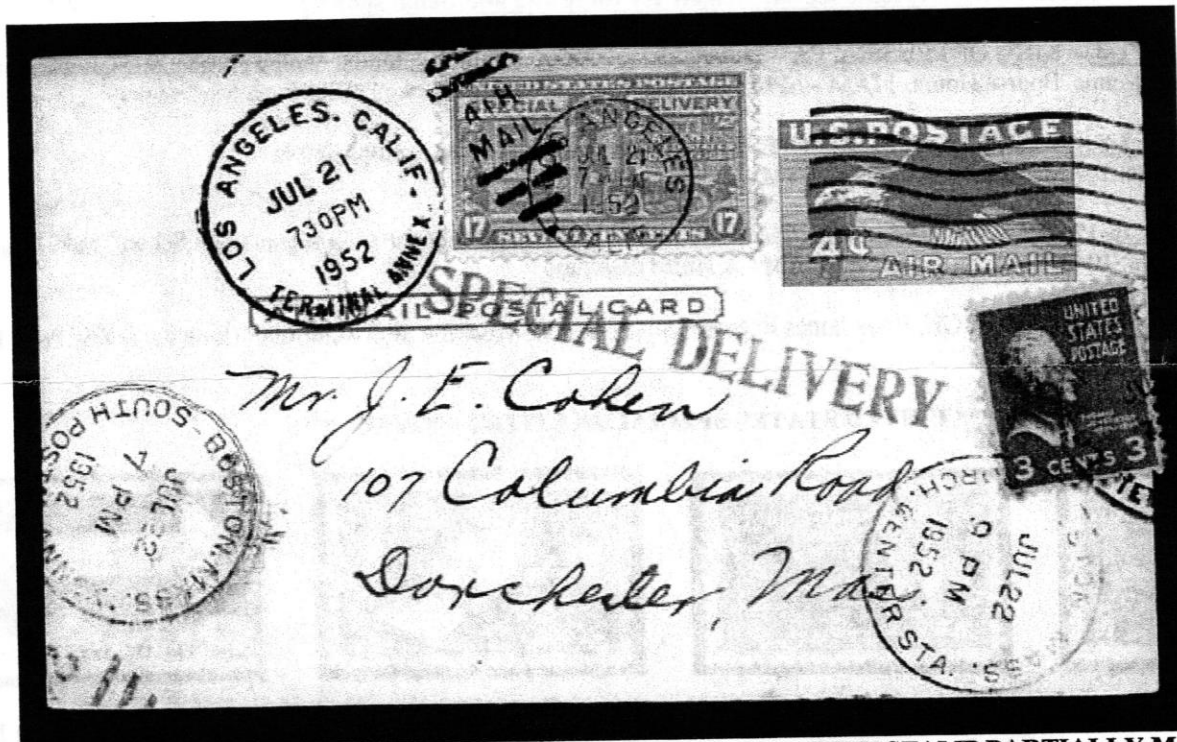


The Universal Postal Union (U.P.U.) established a basis for a special service to speedily deliver mail for an extra fee in 1885. The United States issued the first special delivery stamp on October 1, 1885. Only 555 first class post offices provided service. On October 1, 1886, service was extended to all offices and is still with us today, but the Special Delivery issues ended in 1971. There were only nine (9) different designs making up twenty-three (23) different issues when you take in to account variations including issues from different printers, different perforations and unwatermarked/watermarked paper. Consult either the Scott U.S. Specialized or Volume 1 catalogue for further details.

TOM'S TOPICS" from your Treasurer, Tom Reiff
SHORT ARTICLES RELATING TO PHILATELY:NEWS, STAMPS,
POSTAL HISTORY, COLLECTIONS, ETC.

*** U.S. SPECIAL DELIVERY STAMPS 1885 - 1971 ***

<u>SCOTT #</u>	<u>ISSUE DATE</u>	<u>DENOM.</u>	<u>COLOR</u>	<u>DESCRIPTION</u>
E1	10/1/1885	10 CENTS	BLUE	MESSENGER RUNNING
E2	09/06/1888	10 CENTS	BLUE	MESSENGER RUNNING
E3	01/24/1893	10 CENTS	ORANGE	MESSENGER RUNNING
E4	10/10/1894	10 CENTS	BLUE	MESSENGER RUNNING
E5	08/16/1895	10 CENTS	BLUE	MESSENGER RUNNING
E6	12/09/1902	10 CENTS	ULTRAMARINE	MESSENGER ON BICYCLE
E7	12/12/1908	10 CENTS	GREEN	HELMET OF MERCURY
E8	JAN, 1911	10 CENTS	ULTRAMARINE	MESSENGER ON BICYCLE
E9	SEP, 1914	10 CENTS	ULTRAMARINE	MESSENGER ON BICYCLE
E10	10/19/1916	10 CENTS	ULTRAMARINE	MESSENGER ON BICYCLE
E11	05/02/1917	10 CENTS	ULTRAMARINE	MESSENGER ON BICYCLE
E12	07/12/1922	10 CENTS	GRAY VIOLET	MOTORCYCLE DELIVERY
E13	04/11/1925	15 CENTS	DEEP ORANGE	MOTORCYCLE DELIVERY
E14	04/25/1925	20 CENTS	BLACK	POST OFFICE TRUCK
E15	11/29/1927	10 CENTS	GRAY VOILET	MOTORCYCLE DELIVERY
E16	08/13/1931	15 CENTS	ORANGE	MOTORCYCLE DELIVERY
E17	10/30/1944	13 CENTS	BLUE	MOTORCYCLE DELIVERY
E18	10/30/1944	17 CENTS	ORANGE YELLOW	MOTORCYCLE DELIVERY
E19	11/30/1951	20 CENTS	BLACK	POST OFFICE TRUCK
E20	10/13/1954	20 CENTS	DEEP BLUE	DELIVERY HAND TO HAND
E21	09/03/1957	30 CENTS	LAKE	DELIVERY HAND TO HAND
E22	11/21/1969	45 CENTS	CARMINE/VIO. BLUE	ARROWS
E23	05/10/1971	60 CENTS	VIO. BLUE/CARMINE	ARROWS



“SCARCE USAGE OF THE 17-CENT (SCOTT #E18) SPECIAL DELIVERY STAMP PARTIALLY MAKING UP THE 20-CENT FIRST CLASS SPECIAL DELIVERY FEE IN 1952 ON AN AIRMAIL POSTAL CARD (SCOTT #UXC1)”
 (Author's Collection)

“...AND ALWAYS REMEMBER – COLLECT WHAT YOU LIKE AND ENJOY YOUR HOBBY”